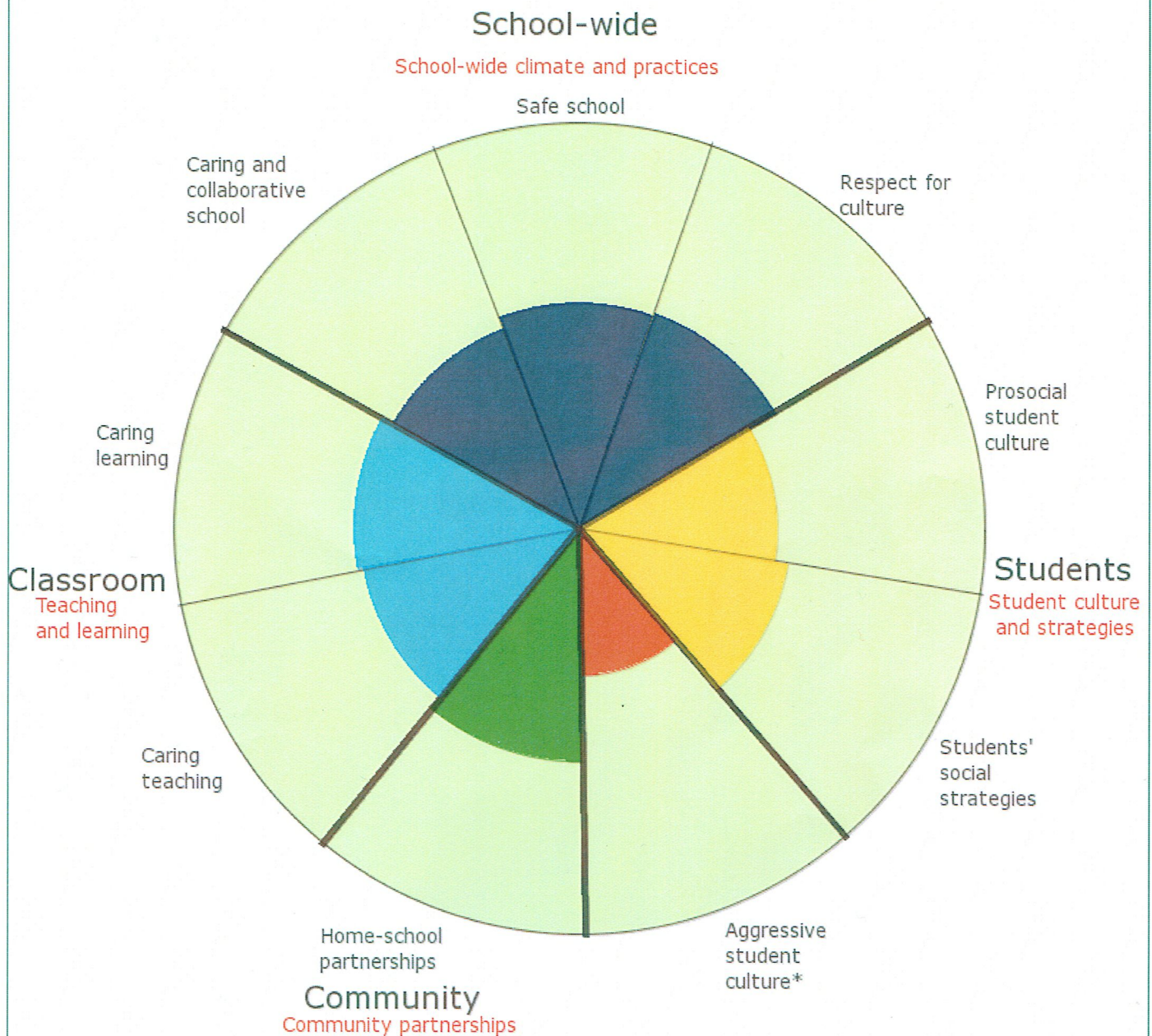


# Wellbeing@School Primary/Intermediate Student Survey

## School at a Glance report



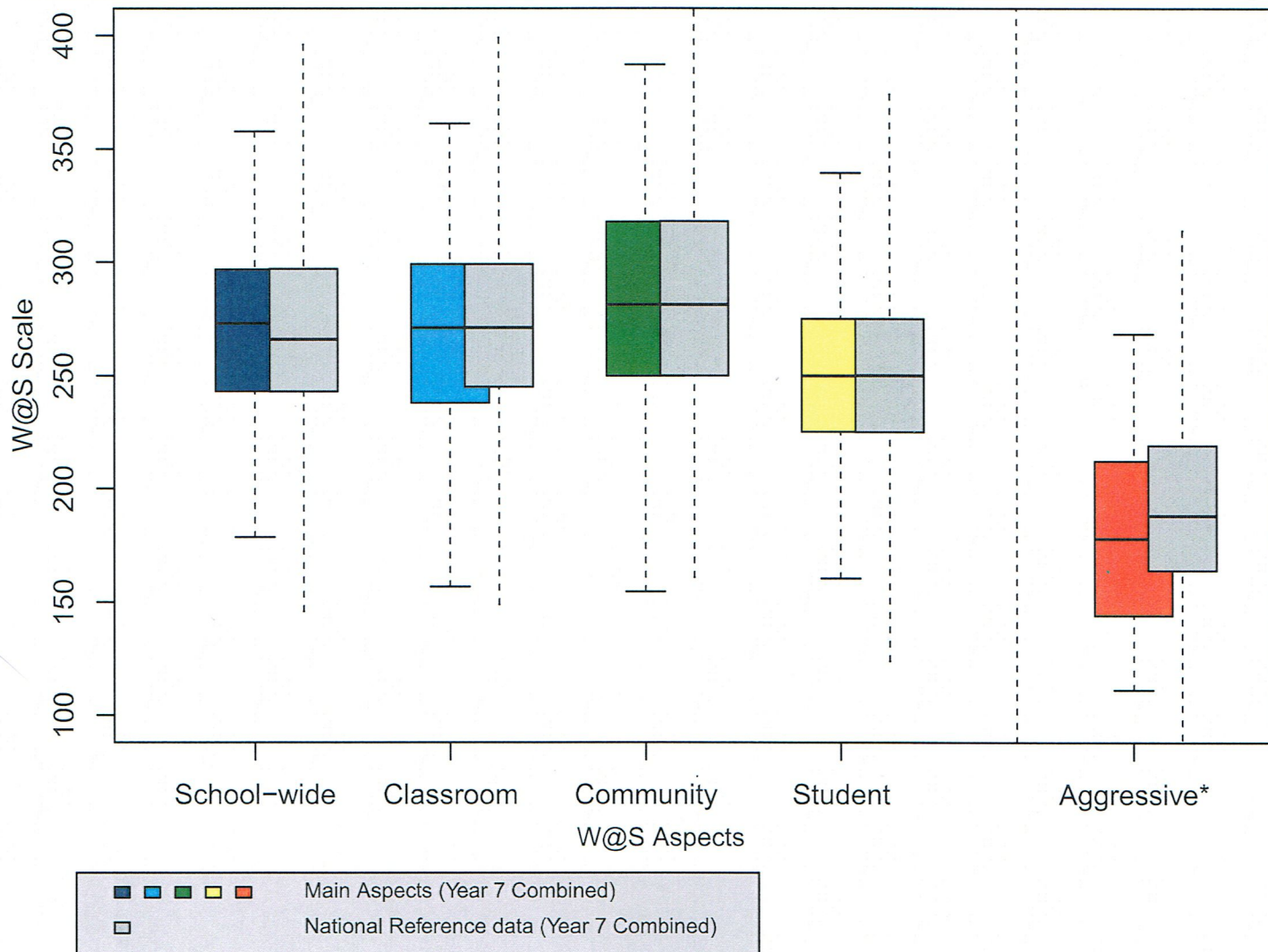
May 2017



■ ■ ■ ■ Main aspects (my school)

[Interpreting W@S reports \(Help\)](#)

\*Aggressive scale is reversed. A low scale unit indicates a low aggressive behaviour



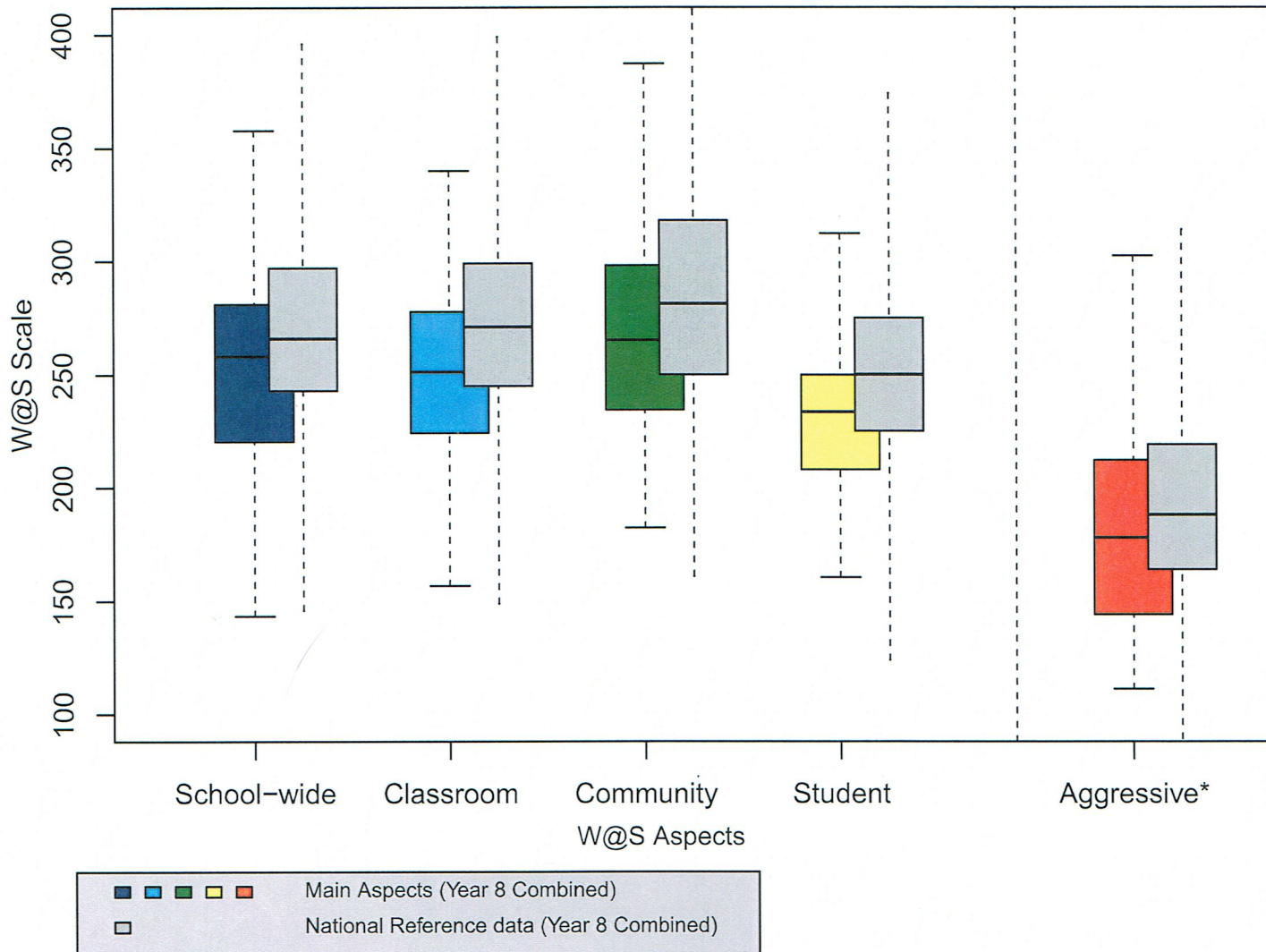
Scale unit is calculated from wbs scale scores

\*Aggressive scale is reversed. A low scale unit indicates a low aggressive behaviour

### Summary Statistics

	School-wide	Classroom	Community	Student	Aggressive*
No. Students	152	151	150	151	150
Maximum	358	361	387	339	268
Upper Quartile	297	299	318	275	212
Median	273	271	281	250	178
Lower Quartile	243	238	250	225	144
Minimum	179	157	155	161	111





Scale unit is calculated from wbs scale scores

\*Aggressive scale is reversed. A low scale unit indicates a low aggressive behaviour

### Summary Statistics

	School-wide	Classroom	Community	Student	Aggressive*
No. Students	122	120	119	120	120
Maximum	358	340	387	312	302
Upper Quartile	281	278	298	250	212
Median	258	251	265	233	178
Lower Quartile	220	224	234	208	144
Minimum	143	157	182	161	111